

CD STOMPER *PRO*

Software

FOR WINDOWS

Quick Start Guide



Copyright notice: ©2001 Avery Dennison Corporation. All rights reserved. Reproduction in whole or part without prior written approval from Avery Dennison is expressly prohibited.

The CD Stomper Pro Software is protected by copyright law and international treaties. Unauthorised reproduction or distribution of this program, or any portion of it, may result in severe civil and criminal penalties.

Microsoft® Windows 95/98/2000/Windows Millennium and Windows NT 4.0 are trademarks of the Microsoft® Corporation.

Other trademarks are the property of their respective owners.

Questions or comments? *Please let us know!*

Stomper Hotline: 0800 587 0878.

CD Stomper, P.O. Box 2318, Maidenhead, Berkshire, SL6 7WG

This number is only available for UK customers.

Welcome to CD Stomper Pro Software

Thank you for purchasing CD Stomper Pro Software. CD Stomper Pro Software is an easy-to-use label-designing application that will have you designing impressive CD/DVD labels in no time at all. CD Stomper Pro Software gives you the tools to create professional-looking CD/DVD labels for personal or professional use. CD Stomper Pro Software also provides many background, and clipart images you can use to create your labels, or you can use your own works of art & your own photos and images!

Using This Quick Start Guide

This Quick Start Guide was designed to get you up and running fast. It will cover basic information about CD Stomper Pro Software, including how to install the application, calibrate your printer, design a basic label, print a label, and then apply the finished label using the CD Stomper Applicator.

More Labels, Please!

To obtain more information about purchasing refill labels for your CD Stomper, please call the Stomper Hotline (0800 587 0878) for more information and support.

System Requirements

Your computer must possess these minimum system requirements to install and use CD Stomper Pro Software:

- Microsoft® Windows 95/98/2000 Windows Millennium & NT4
- Minimum RAM requirements as specified for the operating system plus 2MB for the application, Pentium PC or higher.

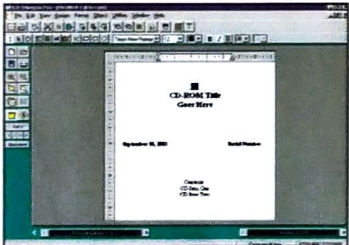
Installation Requirements

- 11MB without Clipart
- 248MB with Clipart & Pre-designs
- Graphics resolution 800x600 pixels
- Minimum 256 colours
- CD Rom drive
- Mouse compatible pointing device
- Windows supported monochrome or colour printer.

1. Installing CD Stomper Pro Software

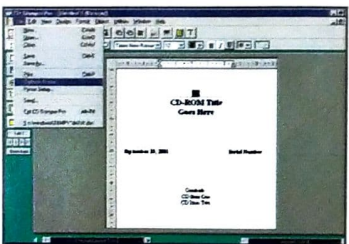
1. Start Windows.
2. Insert the CD Stomper Pro Software CD-ROM into any available CD-ROM drive.
3. From the Windows Desktop, double click on the My Computer icon. Then double-click on your chosen CD drive directory. Double Click on the Start.exe icon to launch the CD Stomper Pro Software installer.
4. Follow the on-screen instructions to complete installation.

Congratulations! CD Stomper Pro Software is Now Installed!



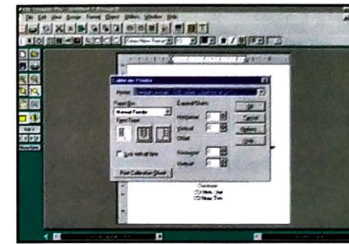
2. Launching CD Stomper Pro

You can launch CD Stomper Pro Software by clicking on the Start button in Windows, select Programs and scroll down to CD Stomper Products folder. Inside the folder, click on "CD Stomper" to start the application. You can also launch CD Stomper Pro Software by double clicking the CD Stomper icon on your Windows Desktop.



3. Printer Calibration

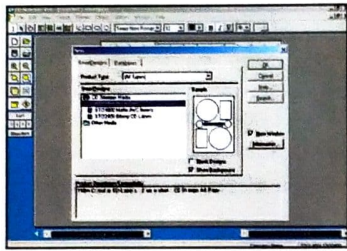
CD Stomper Pro Software has a Print Calibration tool, which is designed to calibrate your printer to optimise printer performance with this software. By performing the simple calibration step to make allowances for variations in printers, you will obtain the best quality label prints possible for your printer.



To calibrate your printer:

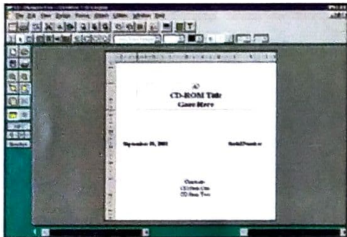
1. Launch the CD Stomper Pro Software application and Click the File menu and select Calibrate Printer.
2. From the calibrate printer dialogue box, select the printer you want to calibrate in the printer drop down list. You should need to calibrate each printer only once.
3. In "Options" make sure the paper size under the paper tab, is set to A4, and you have selected the correct paper source/feeder. Then click OK.
4. In the drop down list under "Paper Bin" make sure the feeder chosen corresponds to that selected in the previous step. If you don't have more than one tray, select the default option in the drop-down menu.
5. Click on the "Print Calibration Sheet" button.
6. Once the sheet has printed, follow the instructions on the calibration sheet. When folding the sheet in half, along the vertical and horizontal axis, make sure the edges of the sheet line up.
7. Following the directions on the calibration sheet make any alterations necessary in the calibrate printer dialogue box.

Your printer is now calibrated for the best performance with CD Stomper Pro Software!

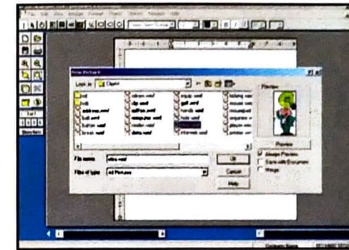


4. Designing a Simple Label

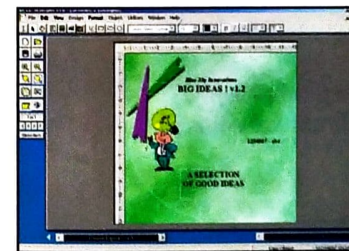
1. From the CD Stomper Pro Software window, click "File, New".
2. The 'New' dialogue box opens.
3. From this dialogue box select "CD Stomper Media" under product type. Then choose and highlight a label type from the "SmartDesigns" selection & click OK. This "SmartDesigns" selection holds all the different templates within the CD Stomper Pro Software.
4. On choosing a label type, the screen will show a single label view, on the overall sheet, for you to design upon. You can alter the "View" on the screen to either see a single label or whole sheet layout. To do this, go to "View", & click either "Full Page" or "Single Design". If you choose "Full Page" you can select the individual single label by clicking on it, seeing it outlined in black. In either view you can edit the individual text boxes on the design by clicking on them, seeing them highlighted in a red frame.
5. To insert a picture on your design, click the Picture Tool icon from the top toolbar, and then click on the area, on the single label, where you wish the picture to appear. (Alternatively, go to "Object", "Tools", "Picture Tool" to insert your picture). A new picture dialogue box will appear.



Note: If you did not choose to install clipart and background images on first installation, you will need to insert the CD Stomper Pro Software CD into your CD-ROM drive to locate the clipart or background folders on the CD.



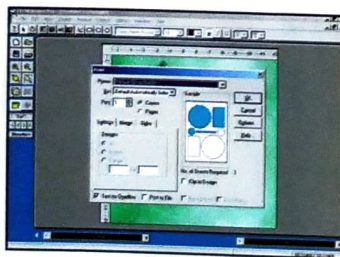
6. From the clipart directory choose the image you want by double-clicking on it. The image will be transferred to the label. You can re-position or re-size the picture by selecting the "Pointer Tool" icon from the top toolbar, to then re-position or re-size the picture. Pre-designed background images for your CD labels and Jewel Case inserts are in directory "bg" on your CD, and clipart images are in directory "clipart".



7. If you want the picture or background image you have inserted to extend to the full area of the single label you are designing upon, (to act as a background), position the picture in the top left hand corner of the label, and stretch out the picture to the opposite far corner. While still having the picture selected, click on the "Send to back" button, on the top toolbar, to send the picture to the back of the label design. (Alternatively, go to "Edit, Send to back" from the top of the screen).

8. To add a new text box, click the "Text frame tool" button from the top toolbar. By clicking on this button, your cursor turns into a text box placement tool. In this mode you can draw a box to contain your text on the label.
9. Position the mouse at the upper left-hand corner where you want your text box to begin.
10. Press and hold down the left mouse button and drag the mouse to create a text box.
11. Click on the "I-Beam Tool" icon, in the top toolbar, to open the text dialog. The text dialog will display on your screen.
12. Type in your text accordingly.
13. To alter font, point size, and colour, right mouse click on the text box, & select "Character". (Alternatively, go into "Format, Character" from the top of the screen). A sample of the font appears in the Sample box, and changes as you select different fonts. When you've completed your selections, click on "Apply".
14. To alter alignment of the text, right mouse click on the text box, & select "Paragraph". (Alternatively, go into "Format, Paragraph" from the top of the screen). When you've completed your selections, click on "Apply".
15. When finished, select the Pointer Tool icon from the top toolbar, to continue your design.
16. Repeat these steps to add more text boxes as required in different locations on the label.
17. If you wish to edit any of the existing text boxes on the label design, repeat the above steps (11 onwards) after selecting the chosen text box with the pointer tool, highlighting it in red.

**Congratulations! You've just created your first label.
Now you can save and print it, or save it for future editing.**



5. Saving and Printing a Label

1. Click the "Save" button in the left hand tool bar, or from the top of the screen, "File, Save". The "Save" dialog appears on your screen.
2. Choose where you want the label saved. (Eg. "Docs" folder)
3. Type in the name you want to give your label in the File Name space.
4. Click "Save".

If you want to save a copy of your label, with a different name, from the top of the screen, select "File, Save As". The "Save As" dialog appears on your screen. Repeat the steps above. If you have not already calibrated your printer for CD Stomper Pro Software, you may wish to calibrate your printer now. See "Printer Calibration" section.

5. Next, click the Print button in the left hand tool bar, or from the top of the screen, "File, Print". When you select the print button, the Print dialogue box appears. From this dialog box you are able to select a different printer (if more than one is connected to your computer) or the number of copies you want to print, among other choices.
6. Place a sheet of label paper in your printer's paper tray. (To learn how your particular printer will feed the label paper, you may first want to print on a blank piece of paper that you've marked to indicate the front side, top edge.)
7. Click OK to print your label - Your label will be sent directly to your default or chosen printer.

Now that you've created your first label, saved it and/or printed it, let's learn more about the dynamic tools and features that are at your fingertips. Remember, CD Stomper Pro Software was developed to have the same look and feel as your other Windows applications, so you'll already know how to use some of the tools and features described.

6. Using the CD Stomper Applicator

Remove the CD Stomper disc-label applicator from the package, and place it on a flat, clean surface. Twist the small centre knob to unlock it and allow the centre plunger to pop up.

1. To apply your printed label, remove the label from its backing after it has been printed.
2. Place the label graphics side down, adhesive side up so the plunger portion of the CD Stomper disc-label applicator is positioned in the centre hole of the label.
3. Place the CD you wish to label data/recorded side up so the small knob of the CD Stomper disc-label applicator is positioned in the centre hole of the CD.
4. Using three fingers, hold the knob so that the tips of your fingers come in contact with the centre part of the CD. Push down on the spring-loaded plunger so the CD comes into contact with the label. Release the plunger.
5. Your CD has just been "Stomped". The Label is now perfectly centred on your CD and is almost ready.
6. It is a good idea to rub the label down onto the CD to remove unwanted air bubbles and to permanently affix the label to the CD. Turn over the CD Stomper disc-label applicator and place the Stomped CD, data/recorded side down, on the rubber bottom. Smooth out your label.

Note: Because you will always want to perform step 6 above of the disc-labeling process, it is a good idea to keep your CD Stomper disc-label applicator on a clean surface so the data/recorded side of your CD won't get scratched.

Don't Forget

If you need any help or assistance with any of the steps above please do not hesitate to call the Stomper Hotline FREE, on

0800 587 0878

1.



2.



3.



4.



5.



6.



Notes:

